



**BOWER PARK**  
ACADEMY

**2023  
2024**



# WELCOME

 BOWER PARK

As the new Principal, I am eager to build upon the academy's success and ensure that every student receives a first-class education that equips them with the skills, knowledge and confidence to succeed in life. I believe that every student has the potential to excel and achieve great things, and it is our responsibility to create a supportive environment that enables them to do so.

At Bower Park Academy, we value diversity, inclusion and respect. We recognise that every student is unique and has their strengths, challenges, and aspirations.

Therefore, we will strive to provide personalised learning experiences that cater to individual needs and interests, while fostering a sense of belonging, teamwork, and community.

As a school, we are committed to providing a safe and secure environment that promotes the well-being and happiness of our students. We will work closely with parents and guardians to create a supportive network that nurtures the holistic development of every child.

In the coming weeks and months, I look forward to meeting with students, parents, and staff to discuss our shared vision for Bower Park Academy and how we can work together to achieve our goals.

Thank you for entrusting your child's education to Bower Park Academy, and I look forward to a successful and rewarding academic year ahead.



Mr E Aylett  
Principal,  
Bower Park Academy





# OUR VALUES

No matter what their starting point or personal circumstances, every student can achieve success. Our pledge to parents is:

**To transform your child's life chances:** Our vision is to strive for excellence to transform the life chances for all.

**To ensure your child achieves success:** Through determination and resilience, every child will excel to obtain outstanding outcomes across a breadth of experiences.

**To help your child become a valued citizen:** Students will develop into well-rounded valued citizens, ready and equipped for a future world, and embracing a love of life.

---

## RESPECT

All members of our school community are expected to respect each other and the environment. Every student has the right to learn at school and we expect them to make the most of that opportunity and respect others' right to learn.

## EFFORT

Through effort and hard work students will achieve success. We expect students to be fully committed to their learning by trying hard at all times and coming to school prepared to learn to the best of their ability.

## ASPIRATION

Students will also need to aim high if they are going to succeed. We want students to dream big about their futures and not limit their aspirations. If they work hard and set themselves ambitious goals, they will achieve success at school.

## PROGRESS

We want our students to make progress, be resilient, try again if they make a mistake. We want our students not only to progress academically but also make progress as an individual ready to contribute positively to society.



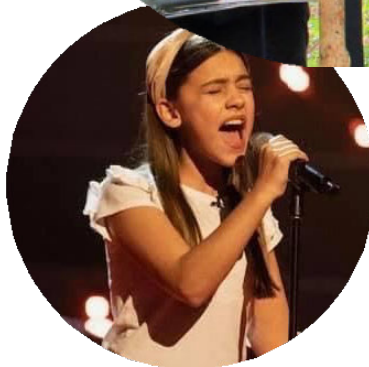
# OUR PLEDGE



We provide every child with a wide range of learning opportunities to help them fully prepare for their adult life. To this end, our pledge is to ensure that every student has the opportunity to:

- Attend a professional performance
- Undertake charity or community work
- Join a school club or extra-curricular activity
- Be part of an international experience
- Lead an activity, event or initiative
- Visit a museum or art gallery
- Perform or present in front of an audience
- Experience another culture or place of worship
- Participate in a residential activity
- Gain experience of further and higher education

By honouring the Pledge, every student will leave Bower Park with a wide range of experiences and memories that will ensure that they have fun and enjoy coming to school. In addition, it will broaden their horizons and cultural awareness – helping prepare them for life in modern day society.



# SKILLS

The Academy is committed to transforming the life chances of every student. They are entering a world of rapid change. The jobs that many of them will end up doing may not even exist yet! Hence, we need to ensure that they develop the skills and attributes that will help them become lifelong learners so that they can adapt to change and have an 'edge' over others in the employment market. At Bower Park Academy these skills, attributes and qualities are known as skills builder.

**LISTENING**

**SPEAKING**

**PROBLEM SOLVING**

**CREATIVITY**

**STAYING POSTIVE**

**AIMING HIGH**

**LEADERSHIP**

**TEAMWORK**

These attributes and skills are woven into our curriculum offer so that every student leaves us life ready and able to succeed as adults.

We also provide opportunities for students to take part in special events where skills are consciously developed. We work with the business community to enrich and enhance these events; helping students to understand life in the world of work and raise their aspirations.



## Key Stage Three

The curriculum (Years 7 to 9) is broad and balanced; designed to develop strong skills for learning so that your child has a firm platform ready for examination courses in Key Stage Four (Years 10 to 11). This includes literacy, numeracy, and the skills for lifelong learning.

## Key Stage Four

All students study examination courses in English (Literature and Language), Mathematics and Science (double award). In addition, they also take core PE. Students are guided through their options choices so that they choose subjects that will ensure they succeed and set themselves up to progress onto further education or apprenticeships and eventually, university and employment. For the most able, we offer the EBacc route with the expectation that students will succeed at the highest level in preparation for A Levels and progression onto university.



The curriculum provides a broad range of experiences that are improving pupils' aspirations.

*Ofsted*



# OPPORTUNITIES

## **Extra-Curricular**

The Academy offers a huge range of extra-curricular opportunities. This is one of the ways in which we help students achieve our Pledge. We operate a Period 6 that runs for the hour after school. If an activity is timetabled for your child, then they would be expected to attend. For example, for year 11, we will timetable revision sessions into period 6 and students will be expected to be there. Similarly, we may timetable enrichment activities, linked to our Pledge, in which case the students timetabled for this will be expected to attend.

If your child has a period 6 activity, you will be given prior notice and it may only happen periodically, although for Year 11, it will be more frequent, given the need to help them achieve the best possible exam results.

## **Aspirations: Aim Higher**

We want our students to not only excel and achieve at the highest level but also aspire to secure places at the top universities. Bower Park students have gone on to study at Russell Group Universities. We monitor the progress of our students very carefully and expect them to achieve the top grades in examinations.

Our Senior Leadership Team and Careers Leader are not only their advocates but also provide excellent and exciting enrichment programmes for students. This includes joint activities with our partners in the Empower Learning Academy Trust, Hall Mead School and The Brittons Academy. In addition, there are regular visits to Universities and the City.



# CARING

We provide a caring atmosphere within which each pupil can prosper. This depends on mutual respect, self-discipline and a willingness to work with others. The Academy places great emphasis on the traditional values of respect, tolerance and hard work.

Form tutors are responsible for the welfare and discipline of their pupils and for monitoring their educational progress. The work of the tutors within each house is supported and coordinated by Directors of Learning and our Support and Guidance Managers.

We have a strong culture of praise and reward as staff believe strongly that praise and encouragement are powerful motivators which should be used whenever possible. Disciplinary sanctions, including detention and (in rare cases) exclusion, are used as appropriate. We are currently reviewing our Pastoral Structure and what is explained below is subject to change. However, our principles of the attainment, progress and wellbeing of the child being central to what we do will remain in whatever structure we have going forward.



**The quality of pastoral care is strong and pupils receive good-quality care.**

*Ofsted*



# SUPPORTED

## Monitoring your child's progress

Each Year group is supported by a Head of Year who is responsible for tracking the progress of students by monitoring their attendance, punctuality, achievement and conduct scores. We understand the direct correlation between good attendance and high GCSE outcomes. Our Heads of Year work closely with our SENCO, EWO and Heads of Department to ensure that any underachieving students are provided with mentoring and intervention support to rapidly improve their progress.

## Providing support and guidance

Every year group has a non-teaching Support and Guidance Manager who supports students with social and emotional barriers to learning. They liaise with parents/ carers and other agencies as well as mentor students requiring extra support and intervention. For those students with the highest level of need, we provide a specialized team of staff to support our most vulnerable learners including: our Education Welfare Officers, Safer schools Police Officer, Safeguarding team and counselling services.

## Providing extra support to accelerate learning

The Academy has developed a comprehensive intervention programme to support learners who are underachieving. There are three waves of support:

**Wave One** is support provided by the class teacher through differentiation or extra support.

**Wave Two** is support provided by the department to accelerate the learning of students by providing Higher Level Teaching Assistant support or catch-up classes after school, at weekends or in the holidays.

**Wave Three** is whole-school support that includes one-to-one tuition or residential workshops.



We want every student to leave the Academy with the understanding, beliefs and values necessary to become not only valued members of their community but also good global citizens. We will achieve this as follows.

## **The Curriculum**

Our Curriculum includes Citizenship, PSHE, Religious Education, History, Geography and Art. Through these subjects, every student will develop an excellent knowledge of the world and gain an understanding of what our responsibilities are in a global society..

## **Leadership Opportunities**

We are very proud of our students and want to give them responsibility within The Academy and the opportunity to develop their leadership skills. Our students are led by a Leadership team who are led by the Head Boy and Head Girl.

The Junior Leadership Team provides an opportunity for all our students to contribute to the development and progress of the Academy.





**BOWER PARK**  
ACADEMY





**BOWER PARK**  
ACADEMY

**Achieve, Enjoy and Excel**

**Bower Park Academy, Havering Road, Romford, RM1 4YY**

**[www.bowerpark.co.uk](http://www.bowerpark.co.uk)**

**01708 730244**

**[office@bowerpark.co.uk](mailto:office@bowerpark.co.uk)**



Bower Park Academy is part of the Empower Learning Academy Trust, which is a charitable company limited by guarantee registered in England and Wales. Registered number 7702119. Registered office Marlborough Garden Upminster, Essex, RM14 1SF



**EMPOWER**  
LEARNING ACADEMY TRUST