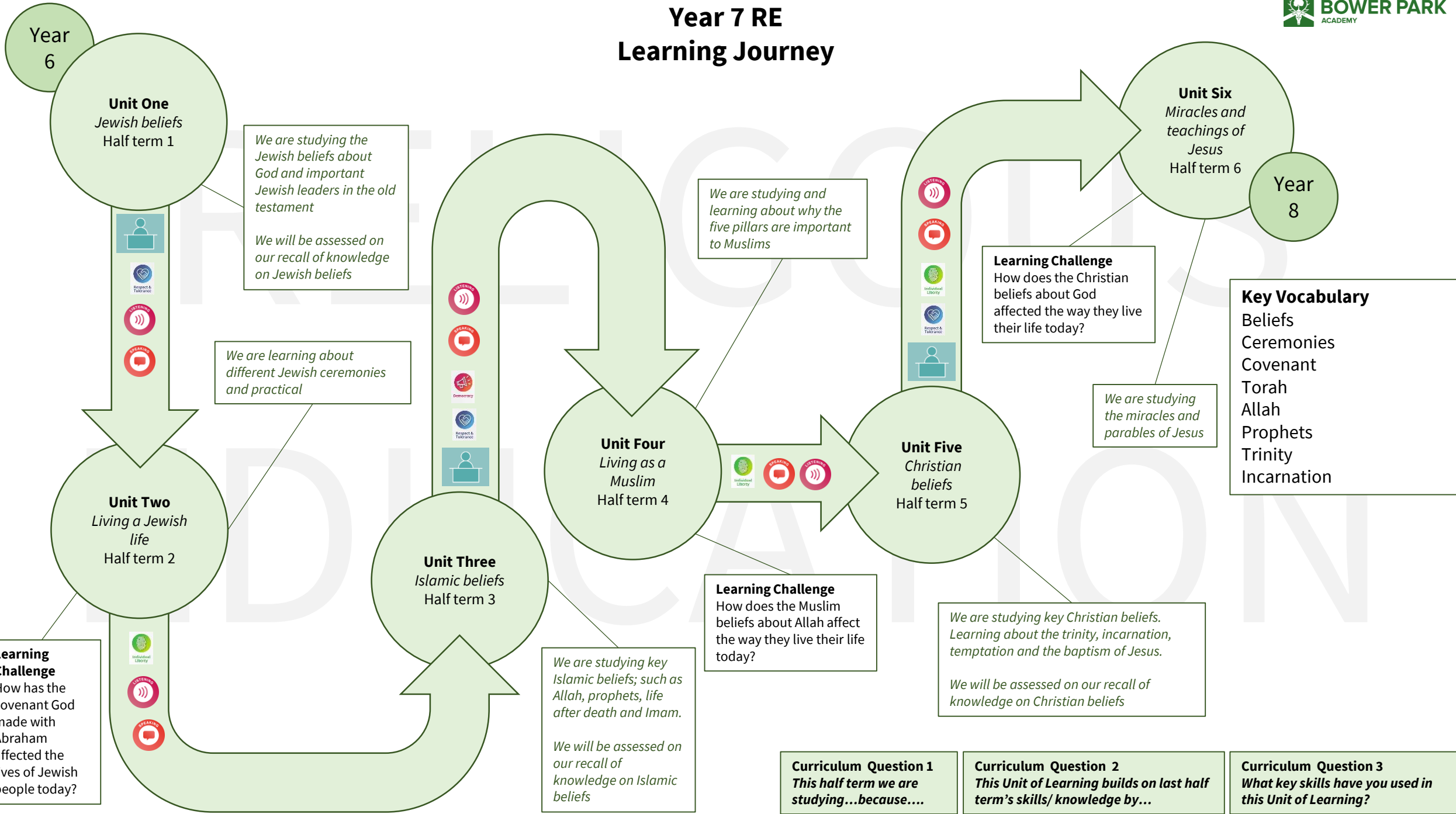
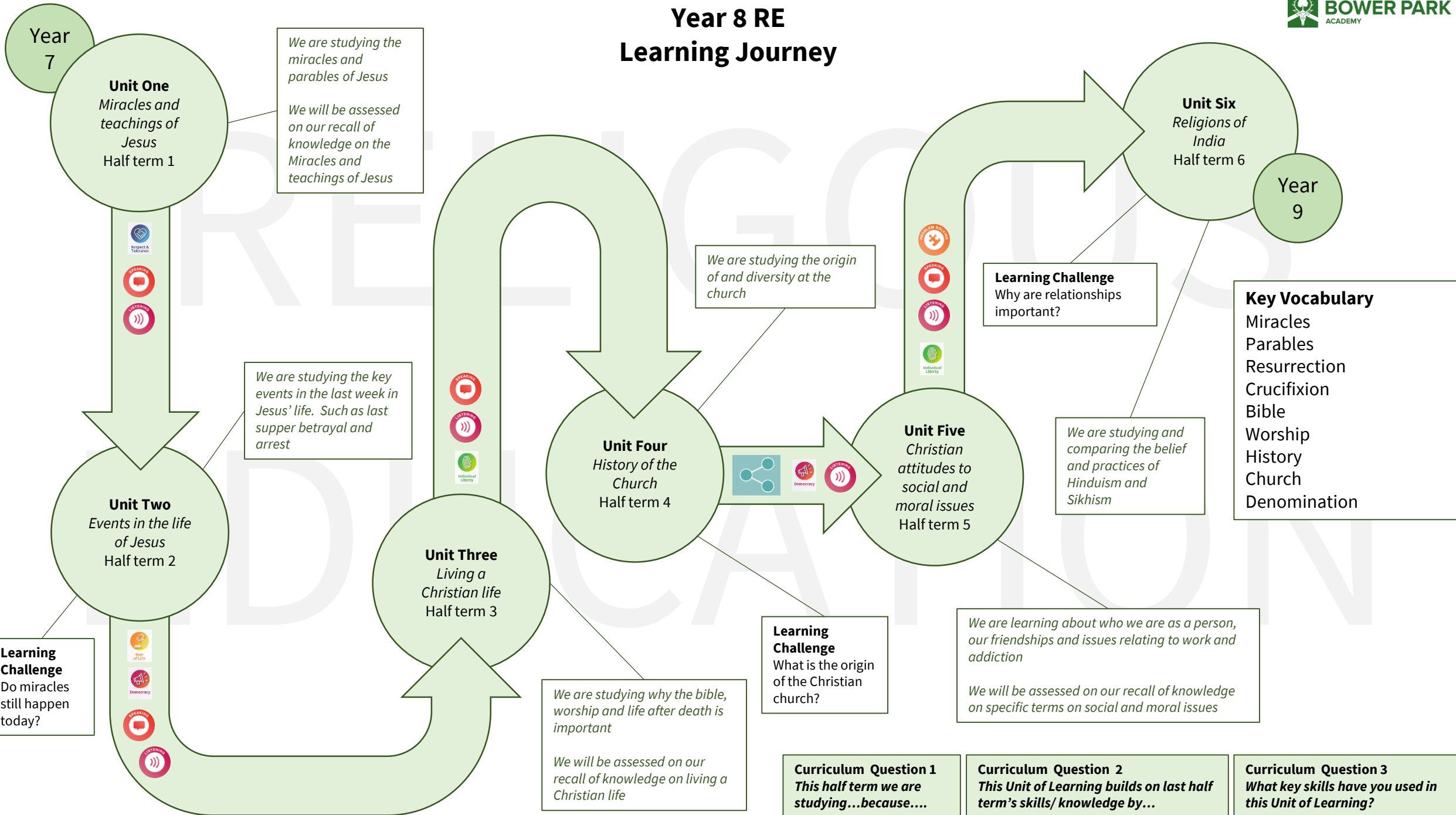


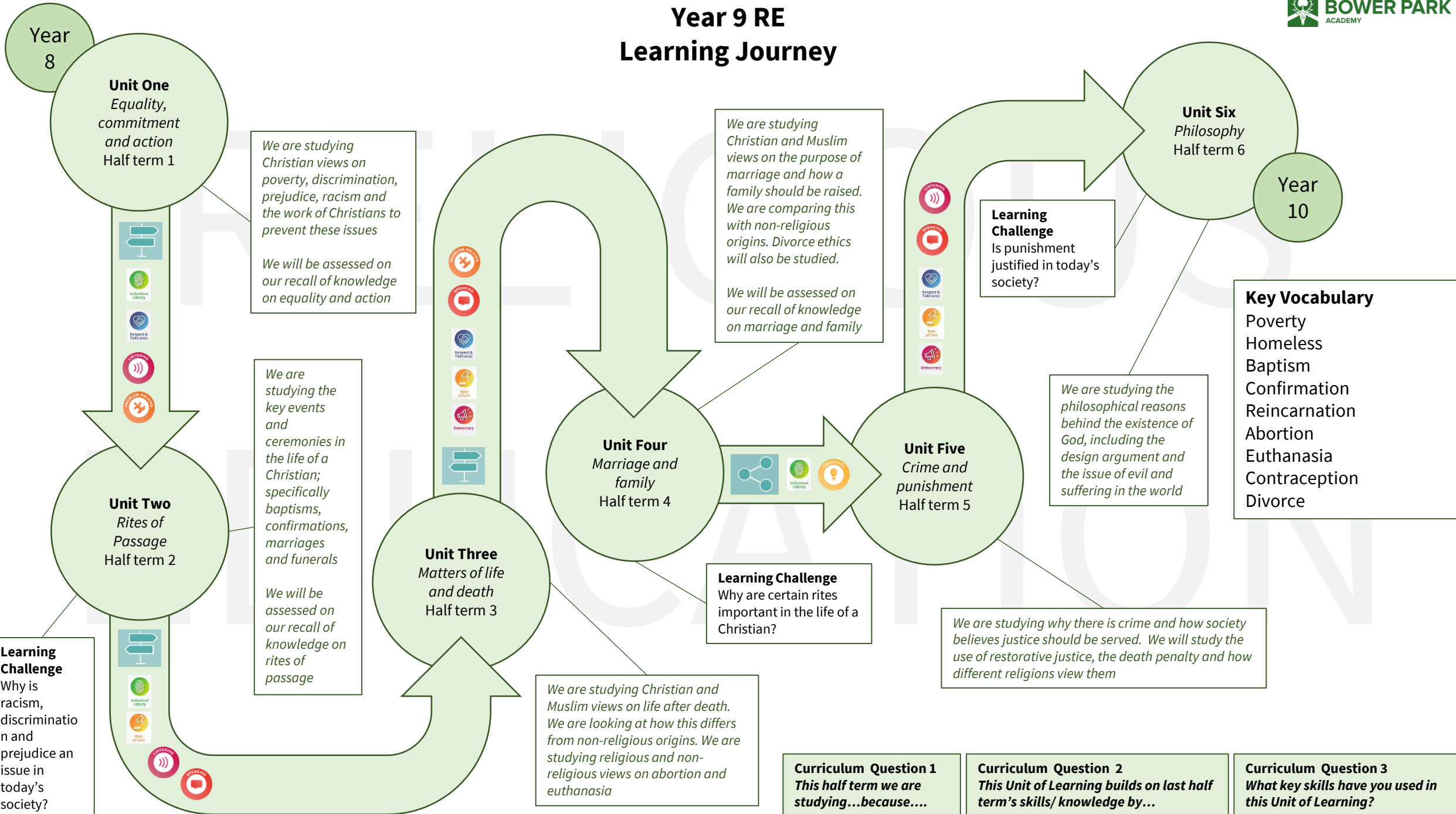
Year 7 RE Learning Journey



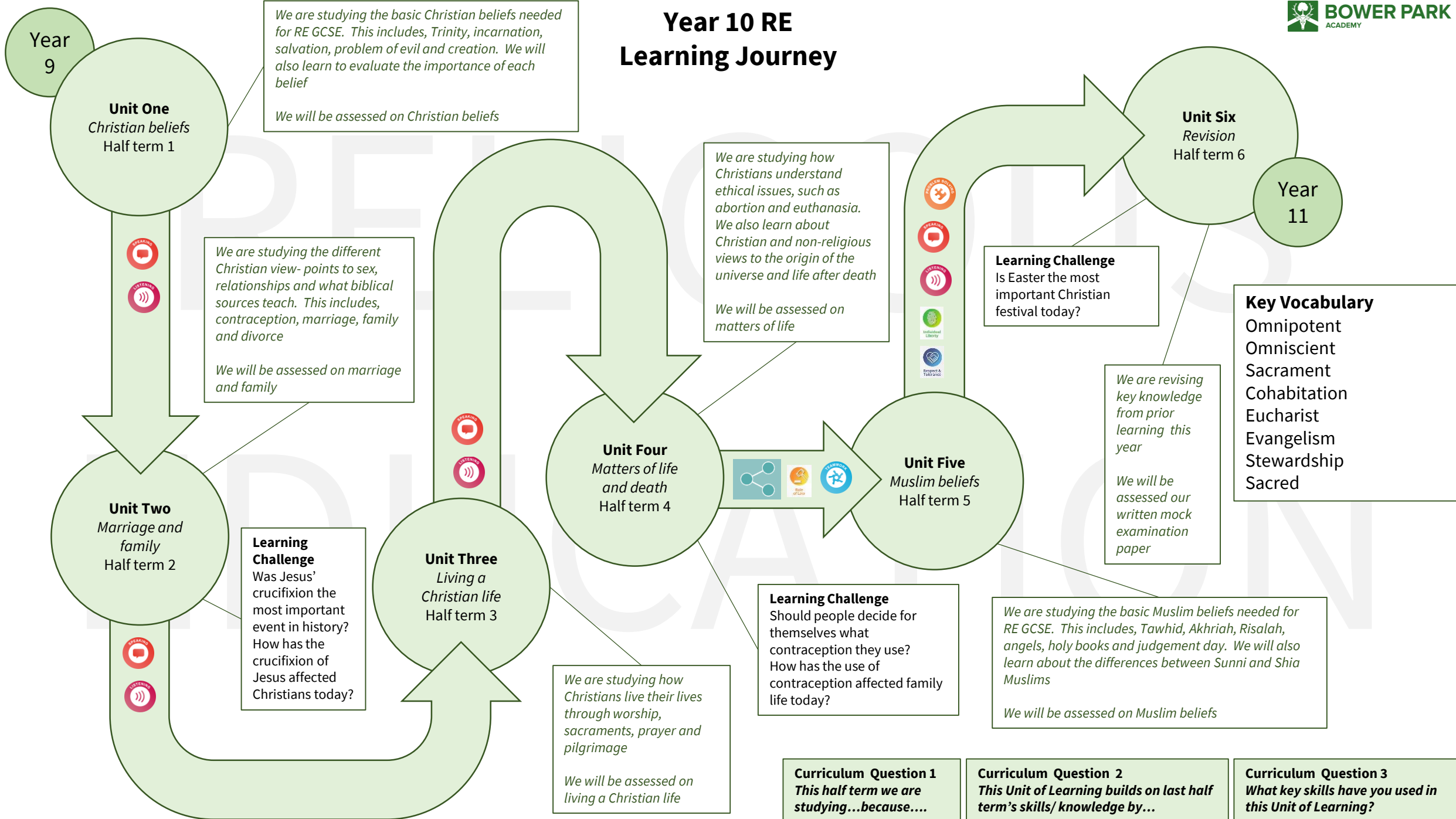
Year 8 RE Learning Journey



Year 9 RE Learning Journey



Year 10 RE Learning Journey



Year 9

Unit One
Christian beliefs
Half term 1

We are studying the basic Christian beliefs needed for RE GCSE. This includes, Trinity, incarnation, salvation, problem of evil and creation. We will also learn to evaluate the importance of each belief

We will be assessed on Christian beliefs

We are studying the different Christian view- points to sex, relationships and what biblical sources teach. This includes, contraception, marriage, family and divorce

We will be assessed on marriage and family

Unit Two
Marriage and family
Half term 2

Learning Challenge
Was Jesus' crucifixion the most important event in history? How has the crucifixion of Jesus affected Christians today?

Unit Three
Living a Christian life
Half term 3

We are studying how Christians live their lives through worship, sacraments, prayer and pilgrimage

We will be assessed on living a Christian life

Unit Four
Matters of life and death
Half term 4

We are studying how Christians understand ethical issues, such as abortion and euthanasia. We also learn about Christian and non-religious views to the origin of the universe and life after death

We will be assessed on matters of life

Unit Five
Muslim beliefs
Half term 5

Learning Challenge
Should people decide for themselves what contraception they use? How has the use of contraception affected family life today?

Learning Challenge
Is Easter the most important Christian festival today?

We are revising key knowledge from prior learning this year

We will be assessed our written mock examination paper

We are studying the basic Muslim beliefs needed for RE GCSE. This includes, Tawhid, Akhriah, Risalah, angels, holy books and judgement day. We will also learn about the differences between Sunni and Shia Muslims

We will be assessed on Muslim beliefs

Unit Six
Revision
Half term 6

Year 11

Key Vocabulary
Omnipotent
Omniscient
Sacrament
Cohabitation
Eucharist
Evangelism
Stewardship
Sacred

Curriculum Question 1
This half term we are studying...because....

Curriculum Question 2
This Unit of Learning builds on last half term's skills/ knowledge by...

Curriculum Question 3
What key skills have you used in this Unit of Learning?

Year 11 RE Learning Journey

