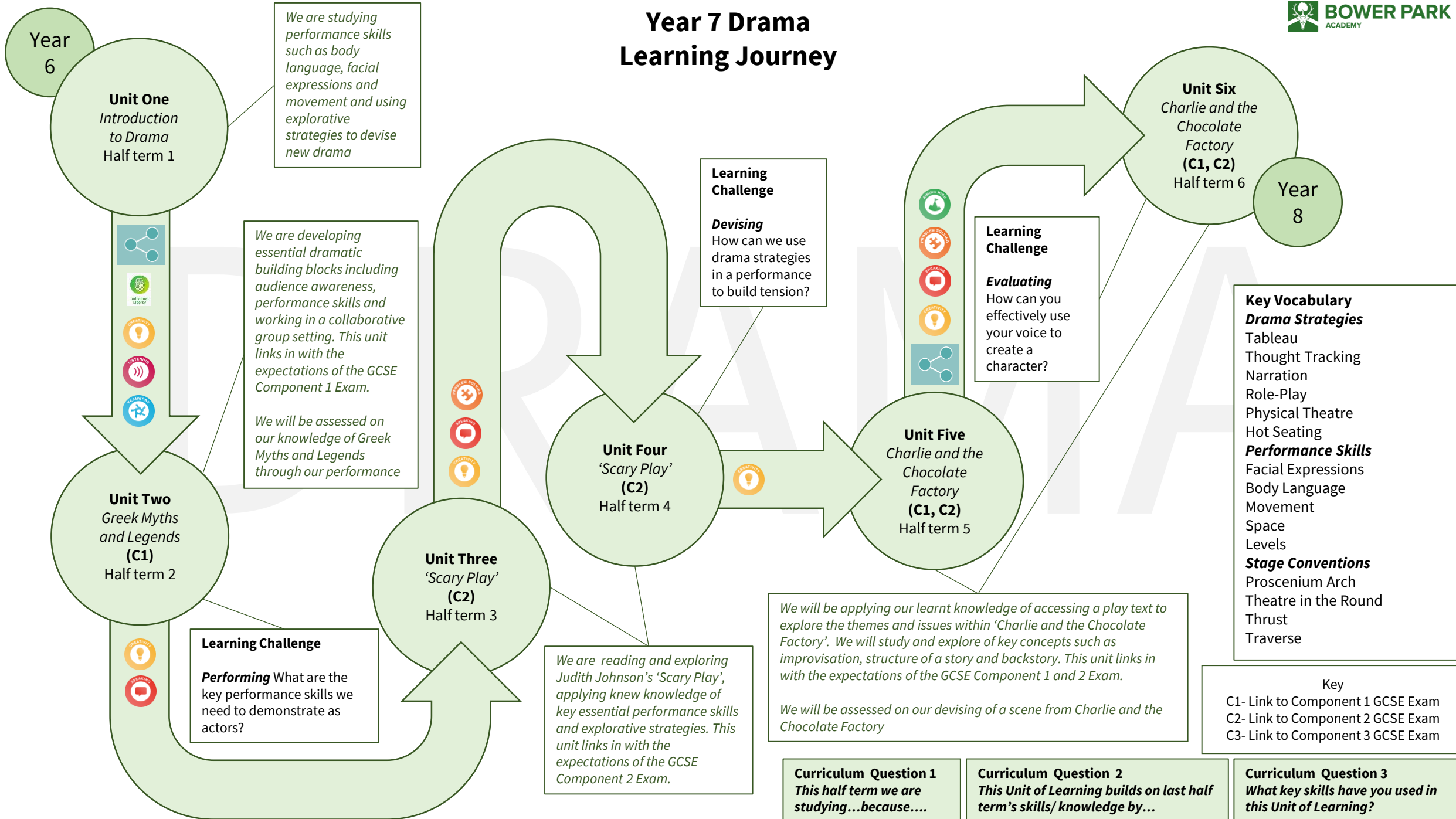


Year 7 Drama Learning Journey



Year 6

Unit One
Introduction to Drama
Half term 1

We are studying performance skills such as body language, facial expressions and movement and using explorative strategies to devise new drama

Digital Literacy
 Creative Thinking
 Listening
 Teamwork

We are developing essential dramatic building blocks including audience awareness, performance skills and working in a collaborative group setting. This unit links in with the expectations of the GCSE Component 1 Exam.

We will be assessed on our knowledge of Greek Myths and Legends through our performance

Unit Two
Greek Myths and Legends (C1)
Half term 2

Learning Challenge

Performing What are the key performance skills we need to demonstrate as actors?

Unit Three
'Scary Play' (C2)
Half term 3

We are reading and exploring Judith Johnson's 'Scary Play', applying new knowledge of key essential performance skills and explorative strategies. This unit links in with the expectations of the GCSE Component 2 Exam.

Unit Four
'Scary Play' (C2)
Half term 4

Learning Challenge

Devising
How can we use drama strategies in a performance to build tension?

Unit Five
Charlie and the Chocolate Factory (C1, C2)
Half term 5

We will be applying our learnt knowledge of accessing a play text to explore the themes and issues within 'Charlie and the Chocolate Factory'. We will study and explore of key concepts such as improvisation, structure of a story and backstory. This unit links in with the expectations of the GCSE Component 1 and 2 Exam.

We will be assessed on our devising of a scene from Charlie and the Chocolate Factory

Digital Literacy
 Creative Thinking
 Speaking
 Listening
 Teamwork

Learning Challenge

Evaluating
How can you effectively use your voice to create a character?

Unit Six
Charlie and the Chocolate Factory (C1, C2)
Half term 6

Year 8

Key Vocabulary

Drama Strategies
Tableau
Thought Tracking
Narration
Role-Play
Physical Theatre
Hot Seating

Performance Skills
Facial Expressions
Body Language
Movement
Space
Levels

Stage Conventions
Proscenium Arch
Theatre in the Round
Thrust
Traverse

Key

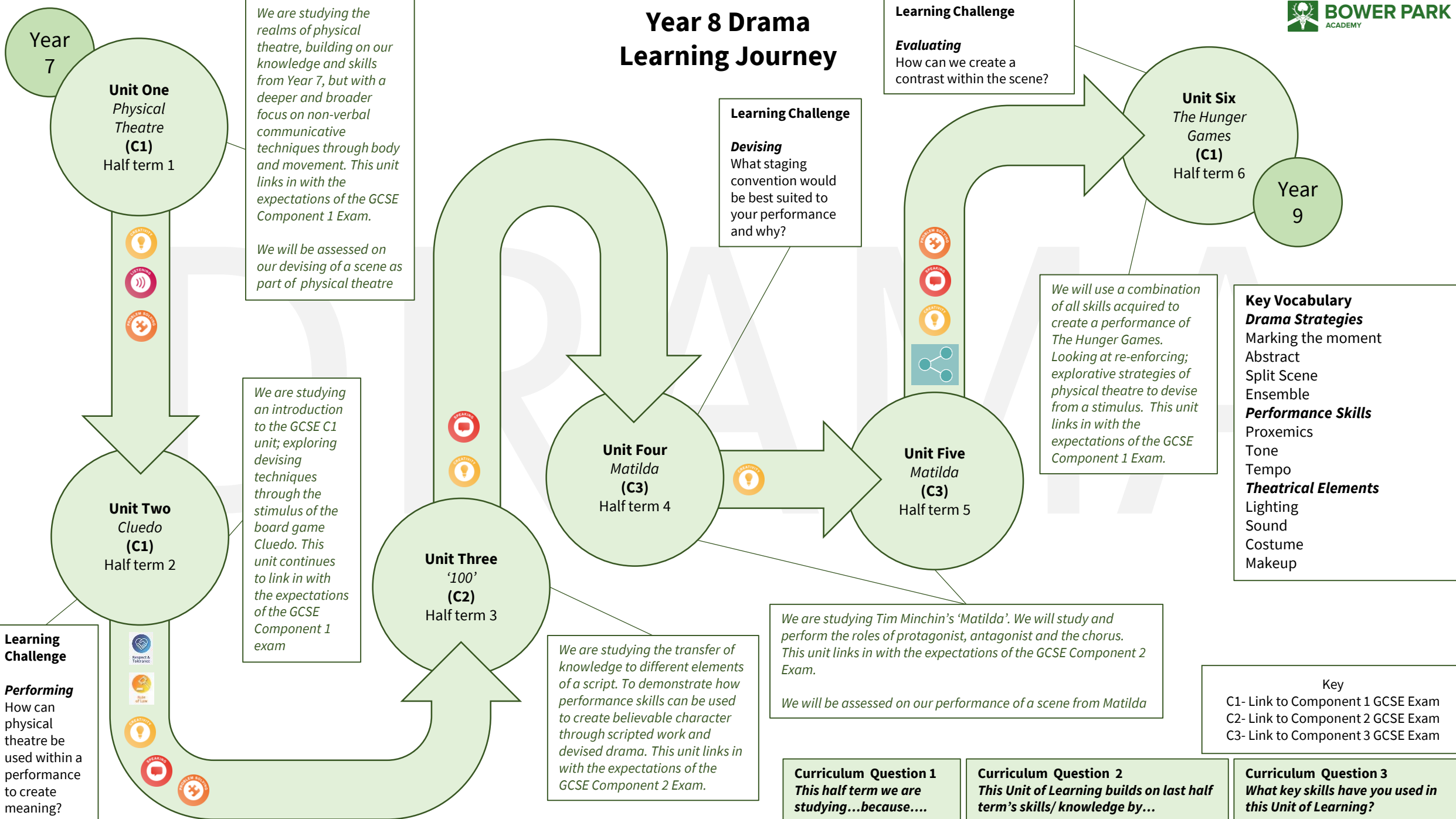
C1- Link to Component 1 GCSE Exam
C2- Link to Component 2 GCSE Exam
C3- Link to Component 3 GCSE Exam

Curriculum Question 1
This half term we are studying...because....

Curriculum Question 2
This Unit of Learning builds on last half term's skills/ knowledge by...

Curriculum Question 3
What key skills have you used in this Unit of Learning?

Year 8 Drama Learning Journey



Year 7

Unit One
Physical Theatre
(C1)
Half term 1

We are studying the realms of physical theatre, building on our knowledge and skills from Year 7, but with a deeper and broader focus on non-verbal communicative techniques through body and movement. This unit links in with the expectations of the GCSE Component 1 Exam.

We will be assessed on our devising of a scene as part of physical theatre

- CREATIVITY
- LISTENING
- PROBLEM SOLVING

Unit Two
Cluedo
(C1)
Half term 2

We are studying an introduction to the GCSE C1 unit; exploring devising techniques through the stimulus of the board game Cluedo. This unit continues to link in with the expectations of the GCSE Component 1 exam

- RESPECT & TOLERANCE
- SKILL OF LIFE
- CREATIVITY
- OPERATING
- PROBLEM SOLVING

Learning Challenge

Performing
How can physical theatre be used within a performance to create meaning?

Unit Three
'100'
(C2)
Half term 3

We are studying the transfer of knowledge to different elements of a script. To demonstrate how performance skills can be used to create believable character through scripted work and devised drama. This unit links in with the expectations of the GCSE Component 2 Exam.

- OPERATING
- CREATIVITY

Unit Four
Matilda
(C3)
Half term 4

Learning Challenge

Devising
What staging convention would be best suited to your performance and why?

- CREATIVITY

We are studying Tim Minchin's 'Matilda'. We will study and perform the roles of protagonist, antagonist and the chorus. This unit links in with the expectations of the GCSE Component 2 Exam.

We will be assessed on our performance of a scene from Matilda

Curriculum Question 1
This half term we are studying...because....

Learning Challenge

Evaluating
How can we create a contrast within the scene?

- PROBLEM SOLVING
- OPERATING
- CREATIVITY
- CONNECTING

Unit Five
Matilda
(C3)
Half term 5

We will use a combination of all skills acquired to create a performance of The Hunger Games. Looking at re-enforcing; explorative strategies of physical theatre to devise from a stimulus. This unit links in with the expectations of the GCSE Component 1 Exam.

Curriculum Question 2
This Unit of Learning builds on last half term's skills/ knowledge by...

Unit Six
The Hunger Games
(C1)
Half term 6

Key Vocabulary

Drama Strategies
Marking the moment
Abstract
Split Scene
Ensemble

Performance Skills
Proxemics
Tone
Tempo

Theatrical Elements
Lighting
Sound
Costume
Makeup

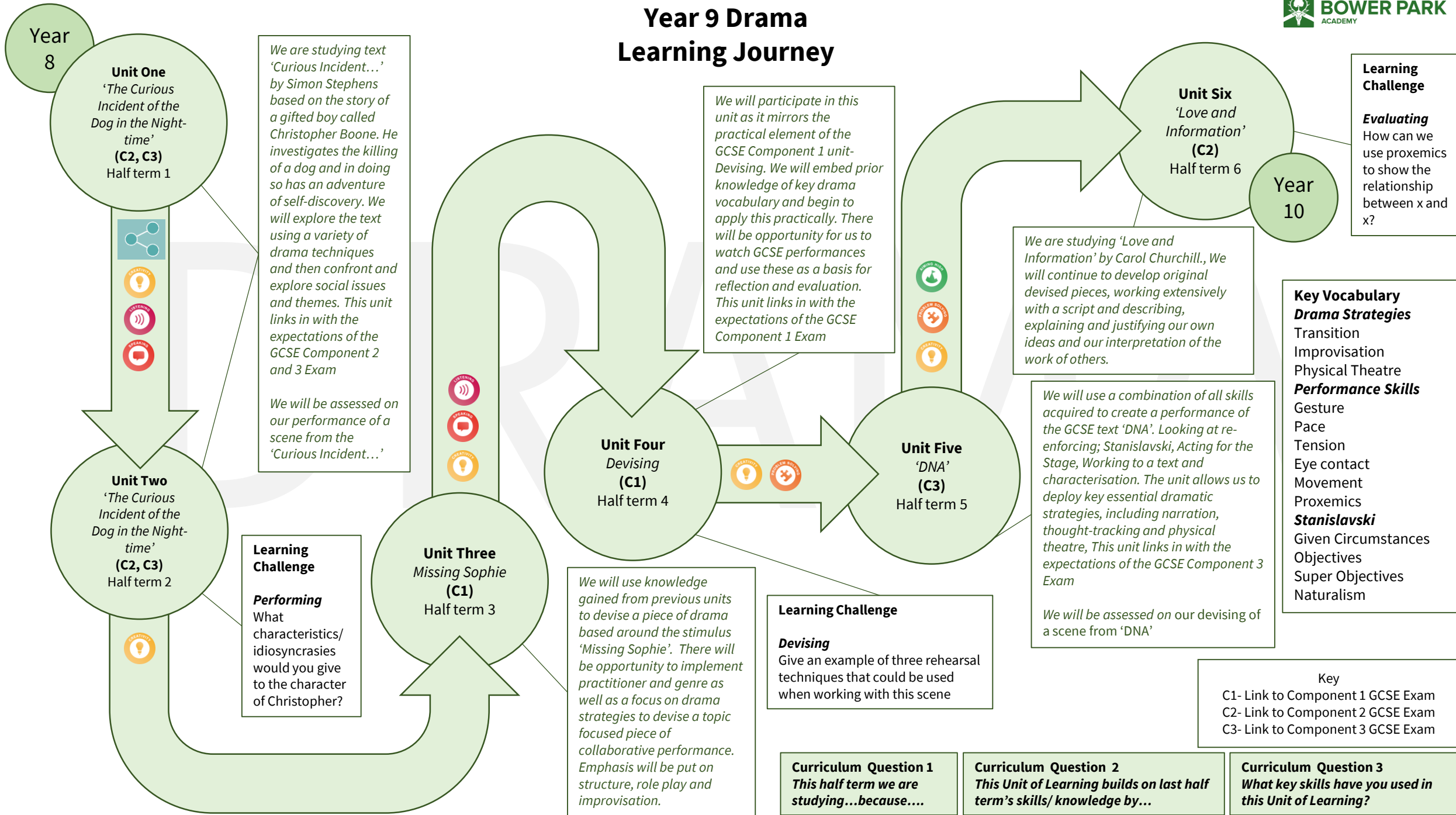
Key

C1- Link to Component 1 GCSE Exam
C2- Link to Component 2 GCSE Exam
C3- Link to Component 3 GCSE Exam

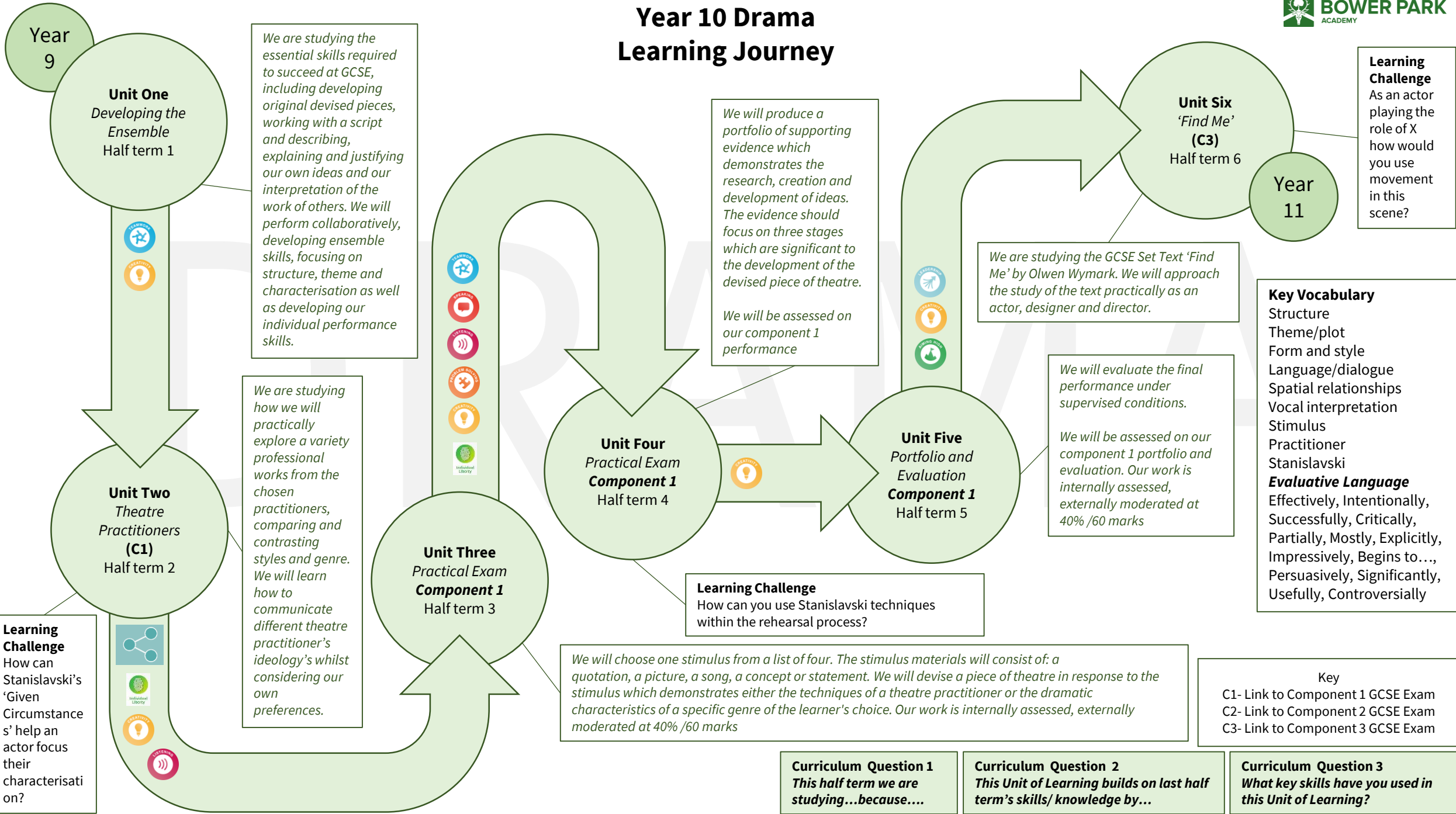
Curriculum Question 3
What key skills have you used in this Unit of Learning?

Year 9

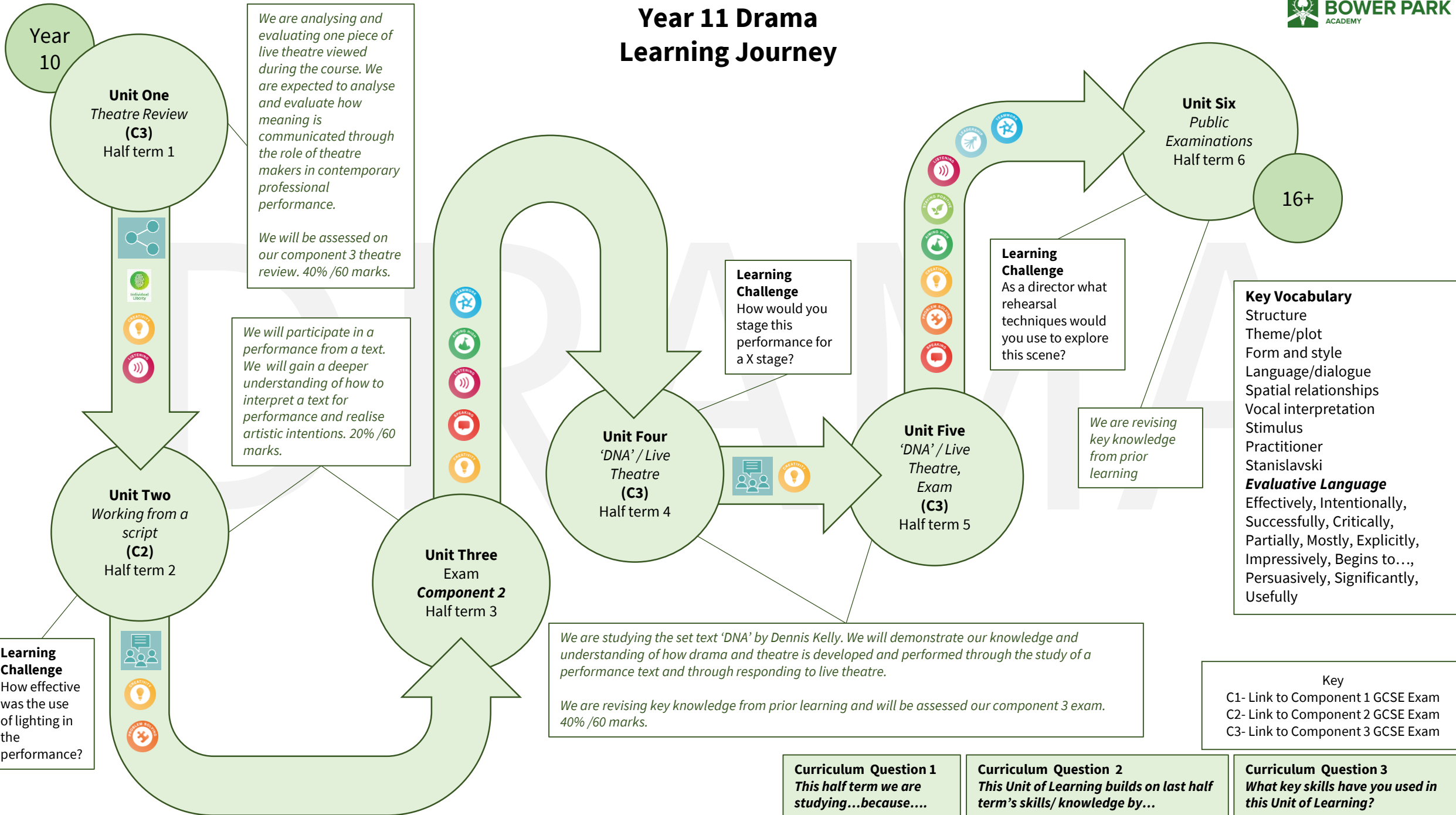
Year 9 Drama Learning Journey



Year 10 Drama Learning Journey



Year 11 Drama Learning Journey



Year 10

Unit One
 Theatre Review
(C3)
 Half term 1

We are analysing and evaluating one piece of live theatre viewed during the course. We are expected to analyse and evaluate how meaning is communicated through the role of theatre makers in contemporary professional performance.

We will be assessed on our component 3 theatre review. 40% /60 marks.

We will participate in a performance from a text. We will gain a deeper understanding of how to interpret a text for performance and realise artistic intentions. 20% /60 marks.

Unit Two
 Working from a script
(C2)
 Half term 2

Learning Challenge
 How effective was the use of lighting in the performance?

Unit Three
 Exam
Component 2
 Half term 3

Unit Four
 'DNA' / Live Theatre
(C3)
 Half term 4

We are studying the set text 'DNA' by Dennis Kelly. We will demonstrate our knowledge and understanding of how drama and theatre is developed and performed through the study of a performance text and through responding to live theatre.

We are revising key knowledge from prior learning and will be assessed our component 3 exam. 40% /60 marks.

Curriculum Question 1
 This half term we are studying...because....

Curriculum Question 2
 This Unit of Learning builds on last half term's skills/ knowledge by...

Curriculum Question 3
 What key skills have you used in this Unit of Learning?

Unit Five
 'DNA' / Live Theatre, Exam
(C3)
 Half term 5

Learning Challenge
 As a director what rehearsal techniques would you use to explore this scene?

We are revising key knowledge from prior learning

Unit Six
 Public Examinations
 Half term 6

16+

Key Vocabulary
 Structure
 Theme/plot
 Form and style
 Language/dialogue
 Spatial relationships
 Vocal interpretation
 Stimulus
 Practitioner
 Stanislavski
Evaluative Language
 Effectively, Intentionally, Successfully, Critically, Partially, Mostly, Explicitly, Impressively, Begins to..., Persuasively, Significantly, Usefully

Key
 C1- Link to Component 1 GCSE Exam
 C2- Link to Component 2 GCSE Exam
 C3- Link to Component 3 GCSE Exam